



## Auto Configuration Server

NTELS Auto Configuration Server (ACS) is a globally compatible IoT platform based on the standard of Broadband Forum (BBF).

The platform consists of N-ACS™ that manages device firmware, configuration and profile, N-Sentinel™ that monitors resources, and N-IMC™ that manages users and services. These systems interwork and communicate with each other using RESTful APIs to control devices for IoT services in a wide range of networks.



### ACS Platform

ACS Platform is an integrated system consisting of N-IMC, N-ACS, and N-Sentinel that closely interwork with each other. Based on the TR-069 standard, the platform enables operators to easily and effectively control and monitor various Customer Premises Equipments (CPEs) in delivering IoT services.

### Features

#### Standards-based Compatibility

- BBF-based data modeling
- Support for commercial routers
- Control using Javascript
- Open RESTful APIs
- STUN Server for NAT configuration

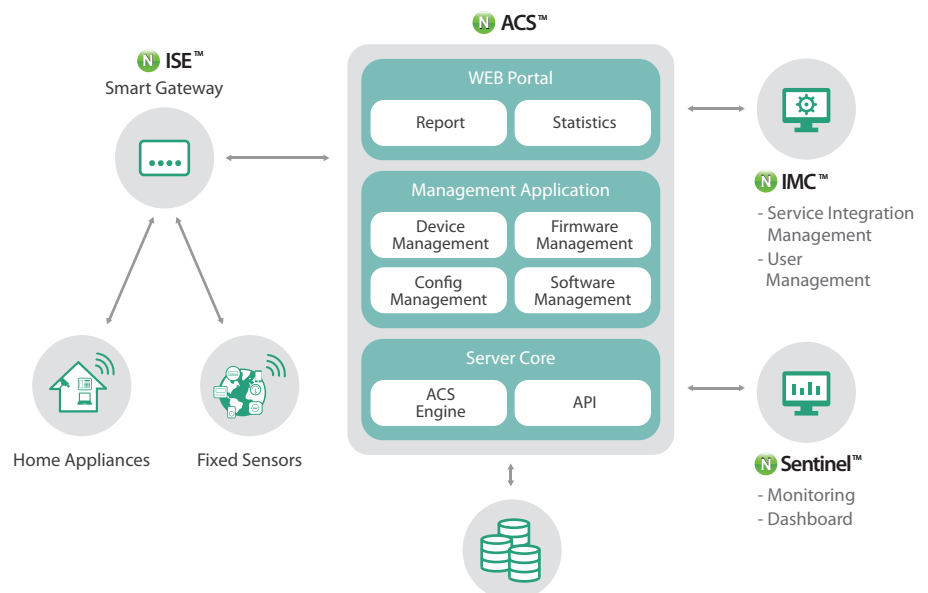
#### Various Means for Efficient Monitoring

- User-friendly UI
- Lightweight agent for monitoring
- Alarm notification with SMS and email
- Support for device discovery
- Support for both standard and non-standard devices



ACS Platform supports Technical Report 069 (TR-069) of the Broadband Forum (BBF).

### Architecture



# Integrated Device Management

Auto Configuration Server

## ACS Platform Features



### Flexible

Adaptive to the operational environment



### Highly Functional

Integrated control of operations and service



### Usable

Protocol standardization for interfacing with internal data



### Scalable

Modular-based scalability



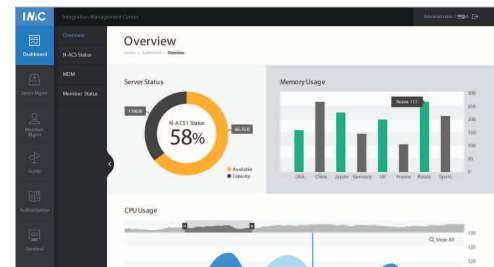
### Reliable

Standards-based architecture

## N-IMC™ : Integration Management Center

N-IMC manages services and users of ACS Platform and monitors the ACS system.

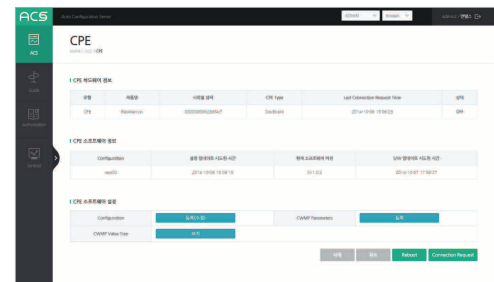
- Service and user management
- Server resource monitoring
- Device registration and testing environment
- Open API testing
- Various statistics and history
- Single Sign-On (SSO) enabled



## N-ACS™ : Auto Configuration Server

N-ACS auto configures devices (customer-premises equipments) and manages device firmware and applications.

- Zero touch provisioning
- Auto configuration
- Device firmware and application upgrade
- Open API testing
- Standards-based data model management
- Device data model collection
- Various statistics and history
- Single Sign-On (SSO) enabled



## N-Sentinel™

N-Sentinel collects data, monitors device status, detects errors, controls processes, and determines the location of devices.

- Distributed and expanded monitoring
- Real-time monitoring
- Various means for monitoring
- Intuitive data visualization with graphs

